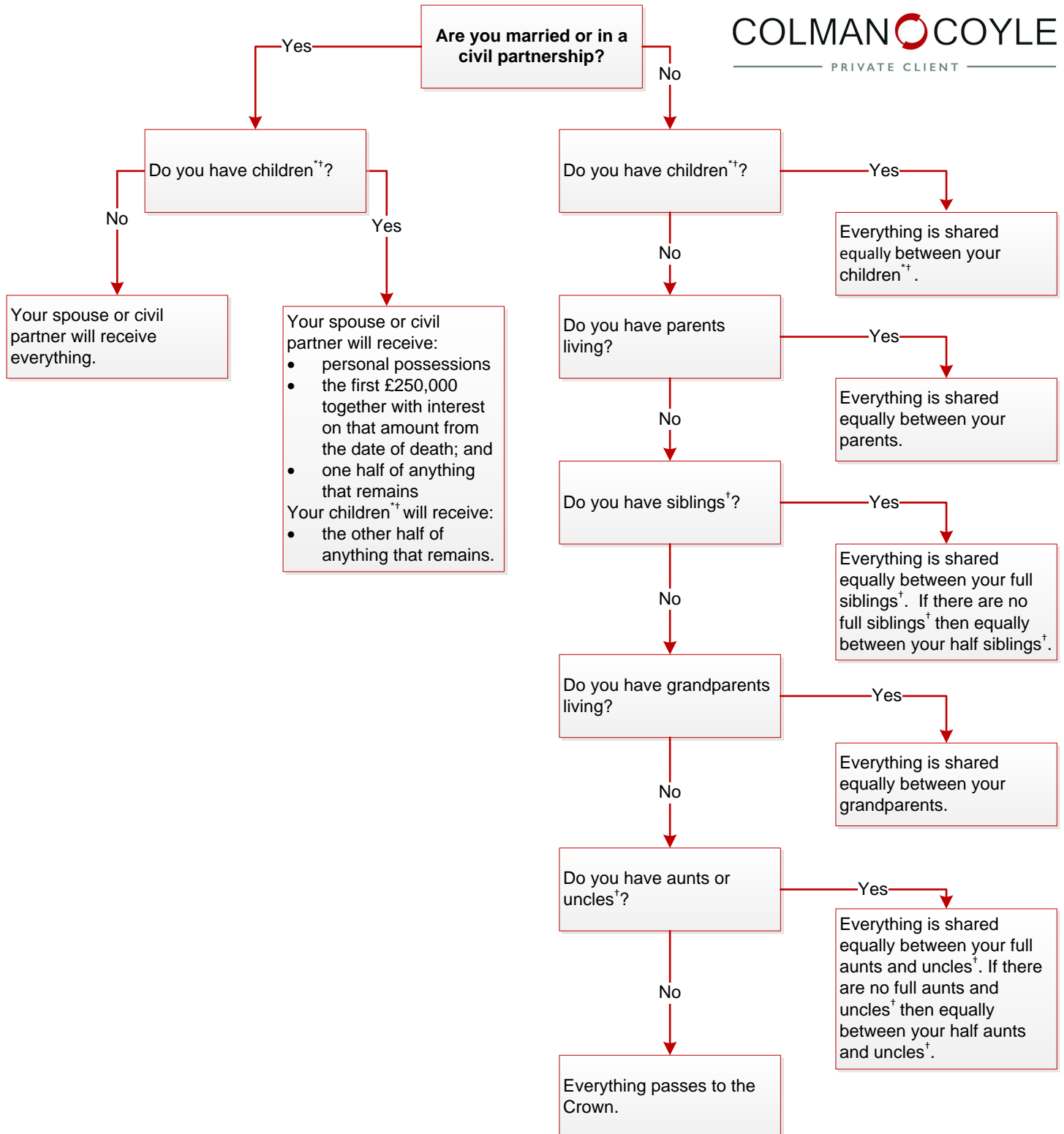


Intestacy rules flowchart

In England and Wales, there are statutory rules which dictate how your estate would be distributed if you die without a will. These are the known as the intestacy rules. Below is a flowchart illustrating who would be the beneficiaries of your estate for deaths occurring on or after 1st October 2014.



* The term children includes illegitimate and adopted children, but not step-children.

† If those relatives were not living at the date of your death but they left descendants who are, then those descendants would usually inherit the share their parent would have taken had they survived you.